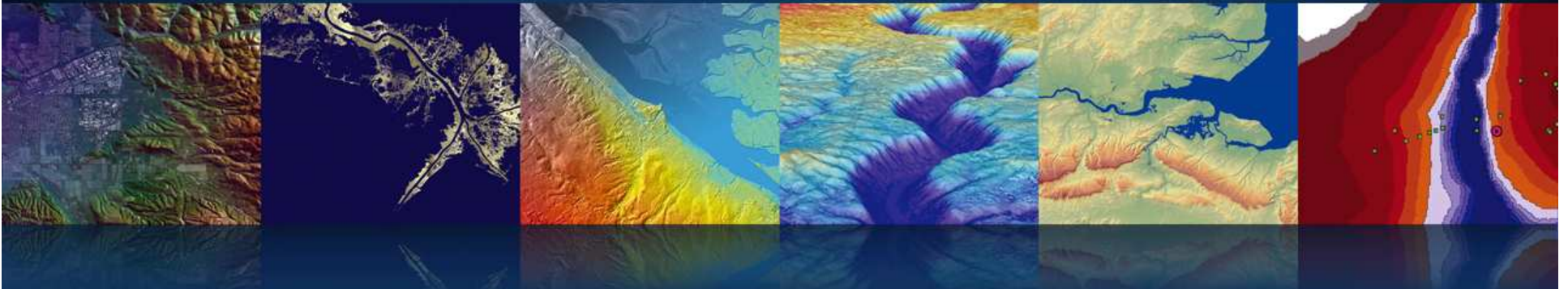


INTERMAP



Metadata: Key in making wise social, economic, and environmental decisions?

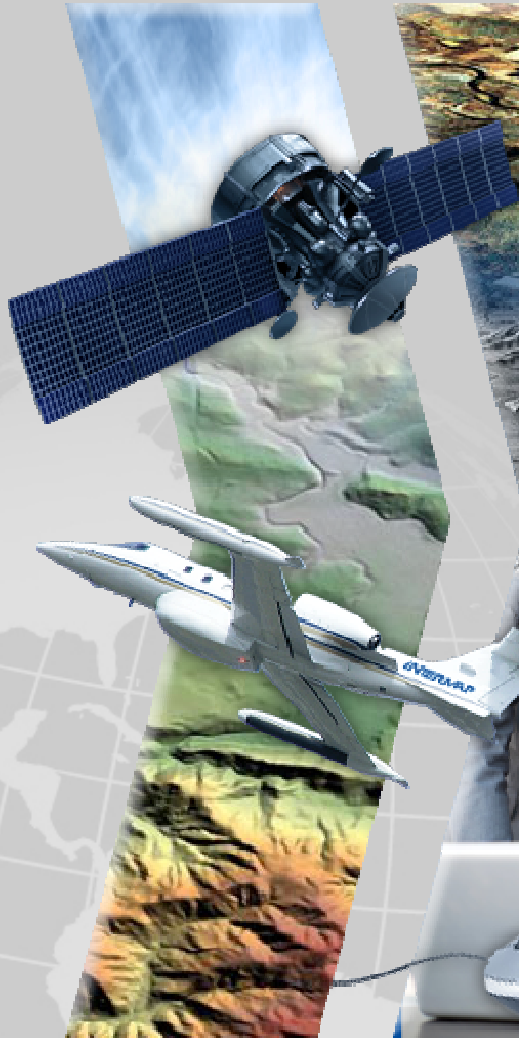
Mr. Todd Oseth
CEO, Intermap
10/23/2011

www.Intermap.com

Geospatial Market Overview

INTERMAP®

Collection



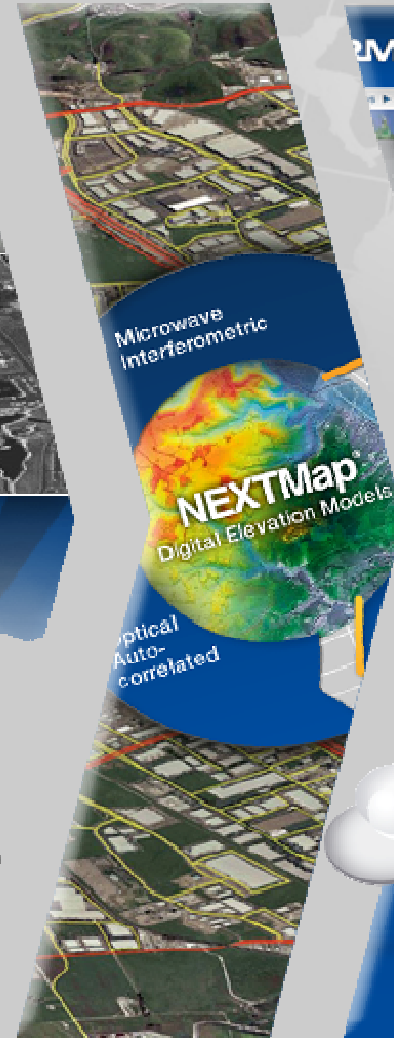
Production



Aggregation



Applications



Distribution



Does the geospatial industry follow universal metadata standards?

latitude posting reference pixel height optical microwave space airborne RGB elevation bands longitude resolution accuracy root mean square satellite collection editing hydro-enforced orthorectification shuttle photogrammetry interferometry LE wavelen red green 3D road web ser database GPS software projection vector raster ideas risk assessment orthometric ellipsoidal heights geodetic ground control network telecommunications buildings carbon exchange storage constellation X-L-P polarimetric national-scale services products infrastructure aggregate fusion 3D viewing contours coverage megabyte GIS Imagery maps reports hub transfer strategic Z height estimate spot height



Exchange Forum with Business Leaders on GGIM

Metadata (Geospatial data › Information › Knowledge › Wisdom)

Geospatial Data Providing Answers

INTERMAP®

Home Page | dev.intermap.cz/adportal/

INTERMAP Advertising Portal | NEXTMap®

Input Data | Map Overview | Market Overview | Market Report | Report Summary

Map | Satellite

- 1**
Input Data
Enter the address for your desired single location or the city and state for your entire market of interest. Use the Market Criteria section to add the demographic data that is of interest.
- 2**
Map Overview
Use the map overview tab to explore your location in 3 different ways: a 3D representation of your area, a 360° image of your location, and an obstructed or unobstructed analysis of your location.
- 3**
Market Overview
Use this tab to view the selected demographic data in step 1 as well as to view the average Traffic speed and Congestion surrounding your location.
- 4**
Market Report
Use this tab to print your report containing the location characteristics and demographic data for your location.

[Get Started](#)



Exchange Forum with Business Leaders on GGIM

Metadata (Geospatial data › Information › Knowledge › Wisdom)

Metadata Defined.... Well Maybe...

INTERMAP

longitude posting date sensor name/type NAD83 HARN/HPGN address enables queries
Ireland 1975 Irish Grid IRENET95 Irish Transverse Mercator ITM WGS84 UTM compliant
GDA94 UTM spatial data infrastructure WGS84 Geographic NAD83 UTM NAD27 UTM
D50 (data about data phic NAD83 State Planes report NAD27 Geographic data
Table RGF93 NAD83 HARN/HPGN Geographic State Plane RSO projections acquisition
1948 ETRS89 Geographic Alaska Albers Equal Area Conic Bessel 1841 Geographic byte
Compliant ETRS89 UT the voice of data Potsdam DHDN latitude NTF France
Gauss Krueger standards links ED50 Geographic acquisition
ED50 Gauss Krueger RGF93 Geographic Greenwich
Lambert Projections Bessel RGF93 Lambert 93 1841
Gauss Kreuger WGS84 Lambert Projections ED50
Lambert Projections NTF Paris Lambert Projections
NTF France Greenwich Geographic searchable
Potsdam DHDN Gauss Kreuger Germany***
Ireland 1975 Irish Grid Transverse
Mercator (ITM) OSGB36 British
National Grid RSO projections
1948 RSO East Malaysia
Kertau 1948 RSO GDA94 PRS92

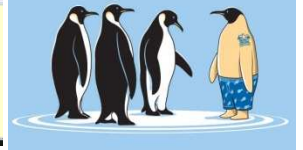
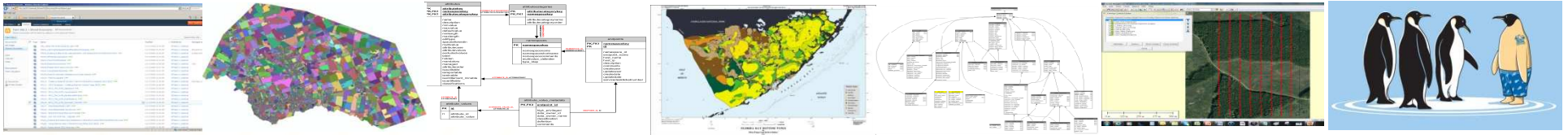


Exchange Forum with Business Leaders on GGIM

Metadata (Geospatial data › Information › Knowledge › Wisdom)

Is Metadata the Answer to Wisdom?

INTERMAP®



Will data issues overcome the ability to solve issues of great importance?



Exchange Forum with Business Leaders on GGIM

Metadata (Geospatial data › Information › Knowledge › Wisdom)

Data About Data...

INTERMAP

Which Metadata Standard Should I Use?



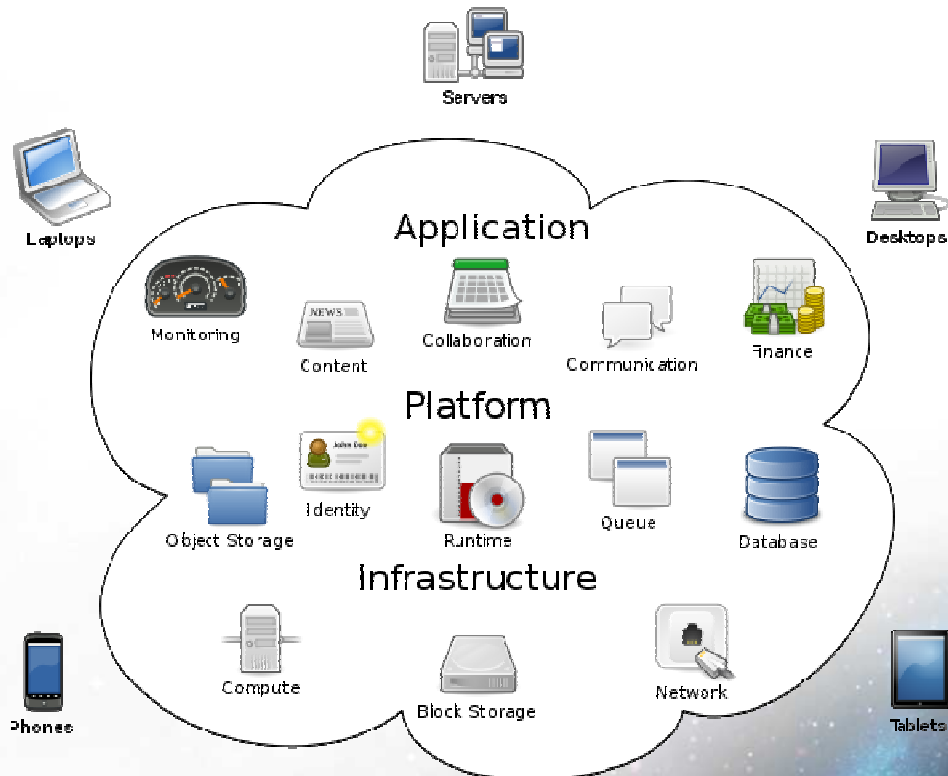
Exchange Forum with Business Leaders on GGIM

Metadata (Geospatial data › Information › Knowledge › Wisdom)

© 2011 Intermap Technologies. All rights reserved.

Are we on the right Metadata path?

INTERMAP



Cloud Computing

- Advances in geospatial metadata methods, storage, search capacity and access, plus a universal metadata standard will put us there....



Exchange Forum with Business Leaders on GGIM

Metadata (Geospatial data › Information › Knowledge › Wisdom)

Concluding Thoughts....

- As geospatial data sophistication grows, so does the required complexity of metadata...
- How can we get to a place where every pixel/post on the planet has tied to it, information and knowledge that can help make wise decisions about social, economic, and environmental issues of pressing importance?

